



Intelligent Washdown Pumps

Precise pumping solution for demanding laboratory environments

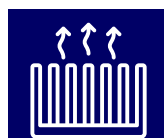
Our IP67 laboratory washdown pumps feature a fully sealed aluminum alloy enclosure, excellent heat dissipation, and EMC compliance. With intelligent controls, robust protection, and versatile connectivity, they're perfect for demanding laboratory environments.

Features



IP67 Rated Housing

Fully sealed enclosure, designed for dust & water-tight applications



Heat Dissipation

Aluminum alloy housing allows excellent heat dissipation



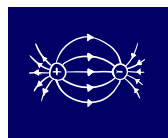
Lock Screen & Password

Security functionality prevents unauthorized operations



Intelligent Control

Intelligent control system for programming and operation



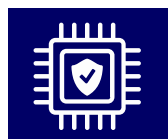
EMC passed

Excellent anti-electromagnetic interference



High Pressure Sealing Ring

Protects motor shaft enabling Deep water pressure operation



Circuitboard Protection

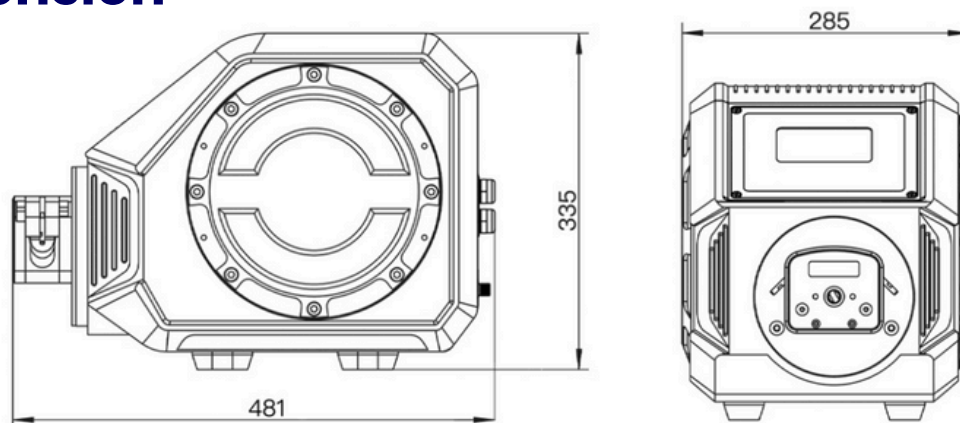
Ensures protection against dust, moisture, static & Corrosion



Communication Interface

Analog signal, RS232, RS485
MODBUS protocol

Dimension



Contact Us

☎ 040-45210400

✉ enquiry@biopulsesolutions.com

🌐 www.biopulsesolutions.com

Specifications



Pump Model	LabWD-4
Part No.	BP902014-209
Flow Rate	0.3 - 6000 ml/min
Motor Speed	0.1 - 600 rpm
Speed Resolution	0.01 rpm
Pump-Head Stack	1
Reversible (CW/CCW)	Yes
Suction Back Angle	0-360 °
External Control	0-5V, 0-10V, 4-20 mA
Display	4.3" Industrial-Grade True color LCD
Control	Touch Screen & Mechanical Keypad
Housing Enclosure	Aluminum Alloy
IP Rating	IP67
Dimensions (LxWxH)	428 x 285 x 335 mm
Power	230 VAC, 50/60 Hz
Weight	21.5 kg

Tube Size	Flow Rate (ml/min) with 2.4 mm Tubing WT
4.8 mm	0.3 - 1800
6.4 mm	0.5 - 3300
7.9 mm	0.8 - 4800
9.6 mm	1 - 6000'

We also offer end-to-end Fluid management solutions including

Single-Use Technologies | Tubing | Fittings | connectors and more...

Contact Us

☎ 040-45210400

✉ enquiry@biopulsesolutions.com

🌐 www.biopulsesolutions.com