



STAINLESS-STEEL DIGITAL PUMP

Lab Series

Smart | Versatile | Precise | Durable

Designed for laboratory applications, this pump features 304 stainless steel housing, a dynamic display, versatile modes, smart calibration, and a maintenance-free motor. Enhanced protection ensures continued high-level of accuracy and reliability.

Features



304 Stainless-Steel Housing

Seamless welding design conforms to GMP requirements



Dynamic Display

View data on one screen: Flow rate, parameters, config, etc.



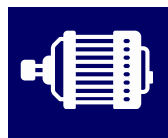
Operational Modes

Continuous flow, Fixed time & volume, Time based start/ stop



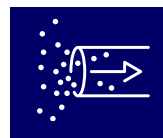
Smart Calibration

Functionality offsets flow to eliminate any errors



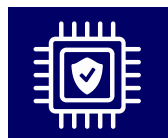
Robust Motor

A Maintenance free motor enables high speed, control & accuracy.



Back Angle Suction

Enables high accuracy level in volumetric dispensing.



Circuitboard Protection

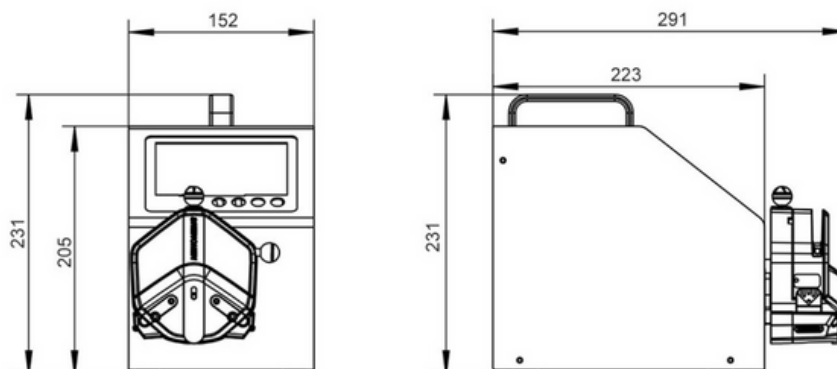
Ensures protection against dust, moisture, static & Corrosion



Communication Interface

Comes with Analogue signal, RS232, RS485 MODBUS protocol

Dimension



Contact Us

☎ 040-45210400

✉ enquiry@biopulsesolutions.com

🌐 www.biopulsesolutions.com

Specifications



Pump Model	LabS-I	LabS-II
Part No.	BP902012-105	BP902012-106
Flow Rate	0.005 - 2580 ml/min	0.18 - 3100 ml/min
Motor Speed	0.1 - 600 rpm	
Speed Resolution	0.01 rpm	
Pump-Head Stack	2	
Reversible (CW/CCW)	Yes	
Suction Back Angle	0-360 °	
External Control	0-5V, 0-10V, 4-20 mA	
Display	4.3" Industrial-grade True color LCD	
Control	Touch Screen & Mechanical Keypad	
Housing Enclosure	304 Stainless Steel	
IP Rating	IP31	
Dimensions (LxWxH)	223 x 152 x 231 mm	
Power	230 VAC, 50/60 Hz	
Weight	5.02 kg	

Tube Size	Flow Rate (ml/min) with 1.6 mm Tubing WT	Flow Rate (ml/min) with 2.4 mm Tubing WT
0.8 mm	0.005 - 32	-
1.6 mm	0.027 - 162	-
3.1 mm	0.093 - 560	-
4.8 mm	0.196 - 1180	0.18 - 1080
6.4 mm	0.333 - 2000	0.27 - 1640
7.9 mm	0.43 - 2580	0.38 - 2300
9.6 mm	-	0.51 - 3100

Accessories

Pump Head (1.6 mm WT)	BP902017-005
Pump Head (2.4 mm WT)	BP902017-006
Mounting Hardware (max. 2 pump heads)	BP902017-105

We also offer end-to-end Fluid Management Solutions Including
Single-Use Technologies | Tubing
| Fittings | Connectors
and more...

Contact Us

☎ 040-45210400

✉ enquiry@biopulsesolutions.com

🌐 www.biopulsesolutions.com