



## Precise Industrial Washdown Pumps

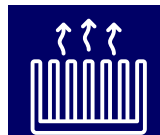
Designed for demanding industrial environments, our IP67 washdown pumps feature a fully sealed aluminum alloy enclosure, excellent heat dissipation, and EMC compliance. With intelligent controls, robust protection, and versatile connectivity, they're perfect for industrial production.

### Features



#### IP67 Rated Housing

fully sealed enclosure, designed for dust & water-tight applications



#### Heat Dissipation

Aluminum alloy housing allows excellent heat dissipation



#### Lock Screen & Password

Security functionality prevents unauthorized operations



#### Intelligent Control

Intelligent control system for programming and operation



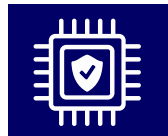
#### EMC passed

Excellent anti-electromagnetic interference



#### High Pressure Sealing Ring

Protects motor shaft enabling Deep water pressure operation



#### Circuitboard Protection

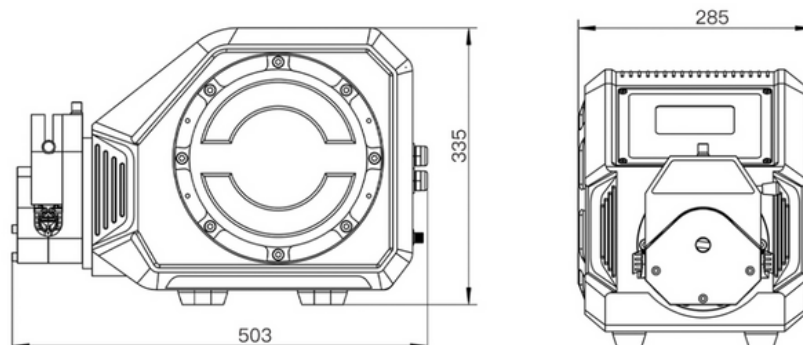
Ensures protection against dust, moisture, static & Corrosion



#### Communication Interface

Analog signal, RS232, RS485  
MODBUS protocol

### Dimension



#### Contact Us

☎ 040-45210400

✉ [enquiry@biopulsesolutions.com](mailto:enquiry@biopulsesolutions.com)

🌐 [www.biopulsesolutions.com](http://www.biopulsesolutions.com)

# Specifications



<b>Pump Model</b>	<b>PDWD</b>
<b>Part No.</b>	<b>BP902014-211</b>
<b>Flow Rate</b>	0.7 - 12000 ml/min
<b>Motor Speed</b>	0.1 - 600 rpm
<b>Speed Resolution</b>	0.01 rpm
<b>Pump-Head Stack</b>	1
<b>Reversible (CW/CCW)</b>	Yes
<b>Suction Back Angle</b>	0-360 °
<b>External Control</b>	0-5V, 0-10V, 4-20 mA
<b>Display</b>	4.3" Industrial-Grade True Color LCD
<b>Control</b>	Touch screen & Mechanical Keypad
<b>Housing Enclosure</b>	Alluminium Alloy
<b>IP Rating</b>	IP67
<b>Dimensions (LxWxH)</b>	428 x 285 x 335 mm
<b>Power</b>	230 VAC, 50/60 Hz
<b>Weight</b>	21.5 kg

<b>Tube Size</b>	<b>Flow rate (LPM) with 3.2 mm Tubing WT</b>
6.4 mm	4.2
9.6 mm	7.4
12.7 mm	12

**We also offer end-to-end Fluid Management Solutions including**

Single-Use Technologies  
Tubing | Fittings | Connectors  
and more...

## Contact Us

☎ 040-45210400

✉ enquiry@biopulsesolutions.com

🌐 www.biopulsesolutions.com