



STAINLESS -STEEL DIGITAL PUMP

Achieve High Precision dispensing accuracy of micro flow rate.

Introducing an Intelligent High-Precision Peristaltic Pump—powered by a servo motor drive for precise, low-pulsation dispensing. Featuring a low pulsation pump head design, the model ensures high-precision filling by minimizing fluid fluctuations through advanced roller phase technology. Ideal for small-volume dispensing in applications such as diagnostic reagent dosing, this pump sets a new standard in precision and performance.

Features



304 Stainless-Steel Housing

Seamless welding design conforms to GMP requirements



Dynamic Display

View data on one screen: Flow rate, parameters, config, etc.



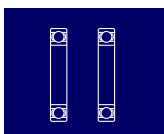
Operational Modes

Volume & Speed dispensing, suitable for different fluid.



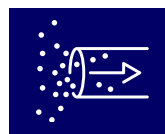
Smart Calibration

Functionality offsets flow to eliminate any errors



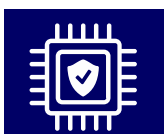
Two Roller Sets

Creates a synergy in fluid peaks and valleys reducing pulsation



Back Angle Suction

Enables high accuracy level in volumetric dispensing.



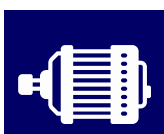
Circuitboard Protection

Ensures protection against dust, moisture, static & Corrosion



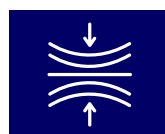
Communication Interface

Comes with Analogue signal, RS232, RS485 MODBUS protocol



Servo Motor Drive

Ensures high precision, and low pulsation while dispensing



Adaptive Pressure

Within tubing space, extends the tubing lifetime effectively

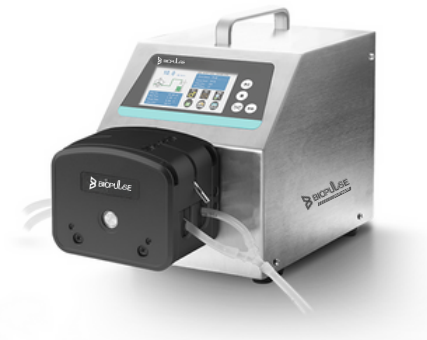
Contact Us

☎ 040-45210400

✉ enquiry@biopulsesolutions.com

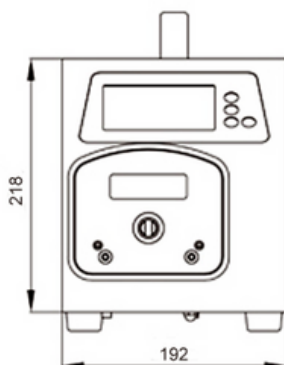
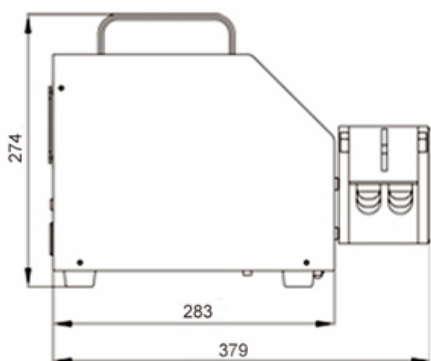
🌐 biopulsesolutions.com

Specifications



Pump Model	LabFil - II
Part No.	BP902013-108
Flow Rate	0.42 - 4340 ml/min
Tubing sizes accepted (2.4 mm WT)	4.8 mm, 6.4 mm, 7.9 mm and 9.6 mm
Motor Speed	0.1 - 350 rpm
Speed Resolution	0.01 rpm
Dispensing Accuracy	<±0.5%
Rollers per channel	6
Suction Back Angle	0-360 °
Display	4.3" Industrial-Grade True color LCD
Control	Touch Screen & Mechanical Keypad
Housing Enclosure	304 Stainless Steel
IP Rating	IP31
Dimensions (LxWxH)	283 x 192 x 218 mm
Power	220 VAC, 50/60 Hz
Weight	7.85 kg

Dimension



We also offer end-to-end Fluid Management Solutions including

Single-Use Technologies
I Tubing I Fittings I connectors

and more...

Contact Us

☎ 040-45210400

✉ enquiry@biopulsesolutions.com

🌐 biopulsesolutions.com